

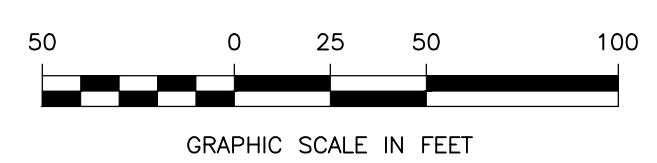
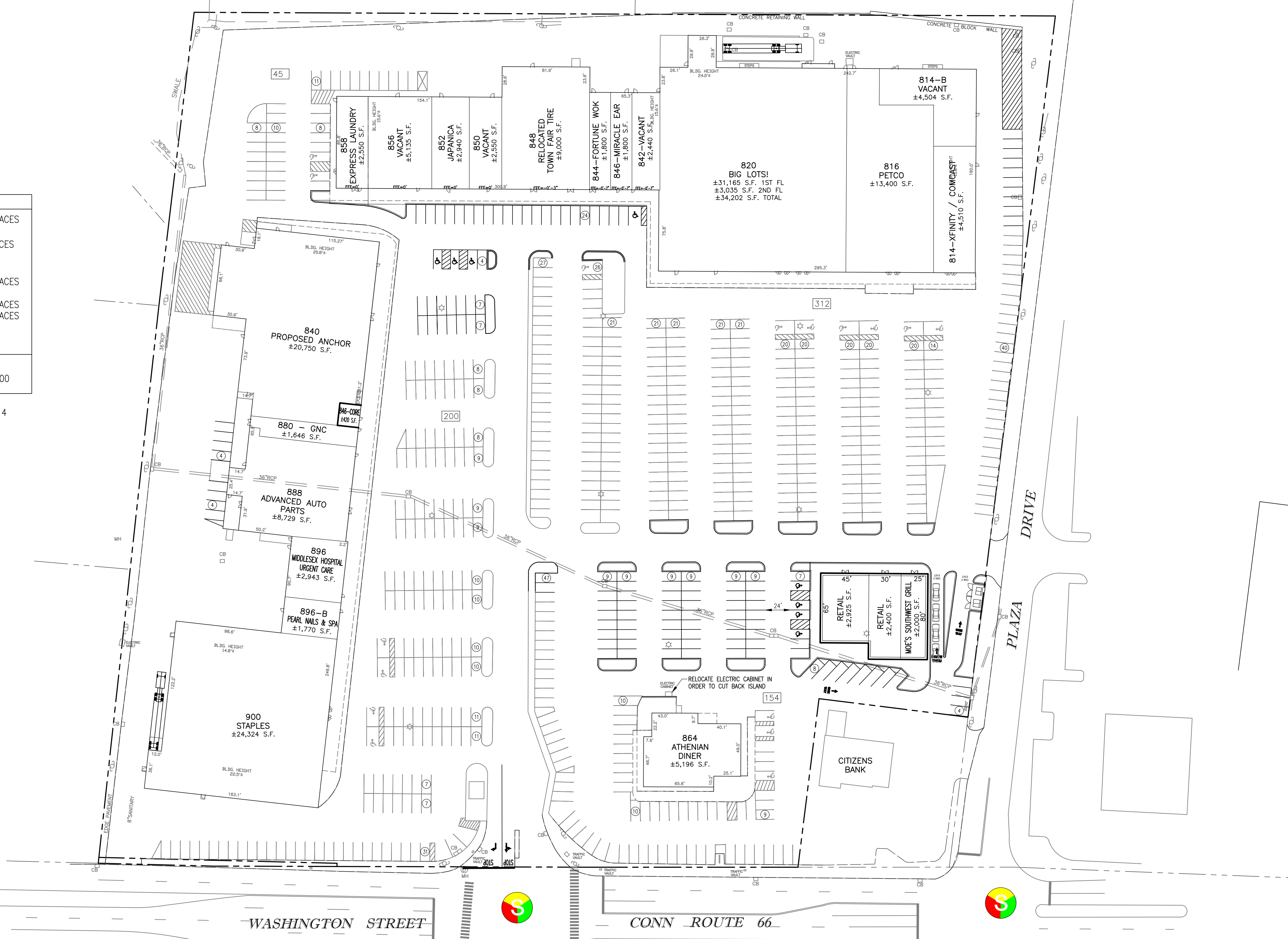
LOCATION MAP NTS

PARKING CHART

137,798 SF RETAIL/SERVICE @ 1/300 SF	= 460 SPACES
4,743 SF MEDICAL OFFICE @ 1/200 SF PLUS 1 SPACE PER 3 EMPLOYEES (SAY 15 EMPLOYEES)	= 29 SPACES
11,936 SF RESTAURANT @ 1/50 SF OF AREA DEVOTED TO PATRON (SAY 8,500 SF) PLUS 1 PER EMPLOYEE ON LARGEST SHIFT (SAY 50 EMPLOYEES)	= 220 SPACES
TOTAL SPACES REQUIRED	= 709 SPACES
TOTAL SPACES PROVIDED	= 711 SPACES

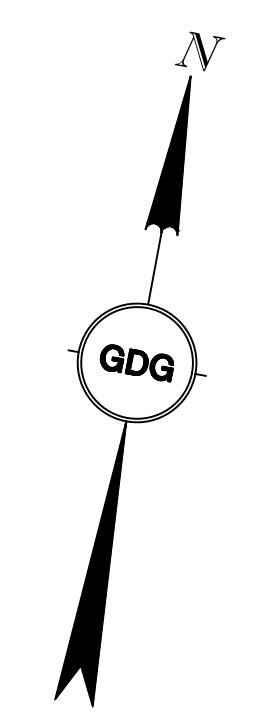
OVERALL PARKING RATIO
154,477 SF = 4.6/1,000

NOTE: PARKING REQUIREMENTS BASED ON CONCLUSIONS MADE IN "ZONING ASSESSMENT - MIDDLETOWN PLAZA SHOPPING CENTER" DATED JANUARY 28, 2014 BY MASSEY CONSULTING GROUP



Revised:
Designed by: JTA
Drawn by: JTA
Checked by: JAG

THIS PLAN IS COMPILED FROM AVAILABLE EXISTING INFORMATION AND IS FOR CONCEPTUAL PLANNING ONLY. FURTHER RESEARCH MAY BE REQUIRED TO VERIFY DIMENSIONS, ZONING REQUIREMENTS, WETLAND LIMITS, FIRE CODES, STATE AND LOCAL PERMITTING, PHYSICAL RESTRAINTS ON SITE, AND TRAFFIC CIRCULATION.



Prepared by:
GDG
Grossman Development Group, LLC
405 COCHITUATE ROAD, SUITE 302
FRAMINGHAM, MA 01701
PHONE: (508) 449-0606

Project Name:
**MIDDLETOWN PLAZA
840-900 WASHINGTON ST.
MIDDLETOWN, CT**

Drawing Name:
CONCEPTUAL SITE PLAN

Scale: 1"=50'
Date: 03/11/2020

Drawing No.:
SP-29

Drawing name: P:\Projects\Middletown, CT\AK\GDG CAD\SP-29.dwg
Mar 11, 2020 12:08pm